

6

5

4

3

2

1

F

E

D

C

B

A

F

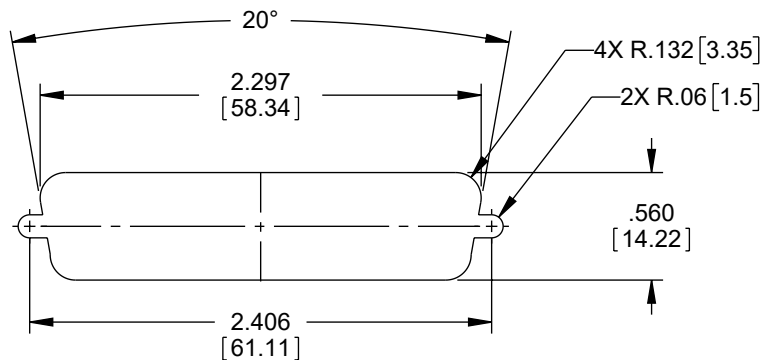
E

D

C

B

A



RECOMMENDED PANEL OPENING
MAX PANEL THICKNESS: .06 [1.5]

NOTE: DIFFERENT STANDOFFS AND JACK SCREWS
ARE REQUIRED FOR PANEL MOUNTING.
SEE WWW.L-COM.COM OR MASTER CATALOG FOR DETAILS.

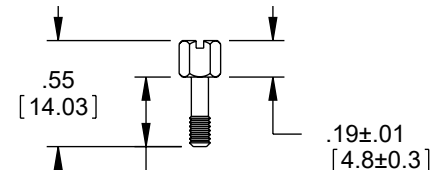
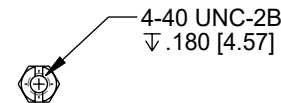
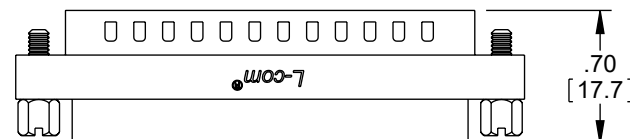
NOTES:

- MATERIAL:**
SHELL: STEEL
CONTACTS: COPPER ALLOY
HARDWARE: BRASS
INSULATOR: PBT FIBER REINFORCED (UL94V-0 RATED)
- FINISH:**
SHELL: TIN/NICKEL PLATED
CONTACTS: GOLD FLASH PLATED, 1-5μINCHES
HARDWARE: NICKEL PLATED
- ELECTRICAL:**
CURRENT RATING: 3 AMP
INSULATION RESISTANCE: 1000 MΩ MIN @500 VDC
DIELECTRIC WITHSTANDING VOLTAGE: 1000 VAC (FOR ONE MINUTE)
- MISCELLANEOUS:**
OPERATING TEMPERATURE RANGE: -55°C TO +60°C.
ALL CONTACTS WIRED STRAIGHT THROUGH.
- COMPONENT SHALL BE TESTED FOR CONTINUITY.
- LABELING:**
BACKGROUND COLOR: PANTONE 2945 BLUE.
TEXT: "L-COM" (FONT: MyriaMM ITALIC)
TEXT: "SOCKET SAVER" (FONT: ARIAL BOLD)
TEXT HEIGHT: .085 [2.16]
TEXT COLOR: WHITE.
- COMPONENT SHALL BE INDIVIDUALLY PACKAGED IAW L-COM SPECIFICATION PS-0031.

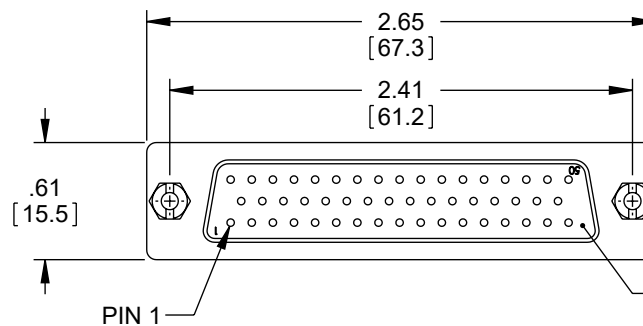
REGULATORY COMPLIANCE:
EU RoHS DIRECTIVE (MOST RECENT RELEASED VERSION)

THE INFORMATION CONTAINED IN THIS DRAWING IS THE SOLE PROPERTY OF INFINITE ELECTRONICS, INC. ANY REPRODUCTION IN PART OR WHOLE WITHOUT THE WRITTEN PERMISSION OF INFINITE ELECTRONICS, INC. IS PROHIBITED. THESE COMMODITIES, TECHNOLOGY OR SOFTWARE WERE EXPORTED FROM THE UNITED STATES IN ACCORDANCE WITH THE EXPORT ADMINISTRATION REGULATIONS. DIVERSION CONTRARY TO U.S. LAW PROHIBITED.

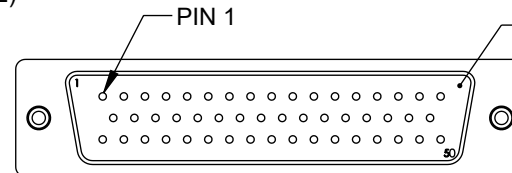
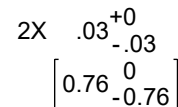
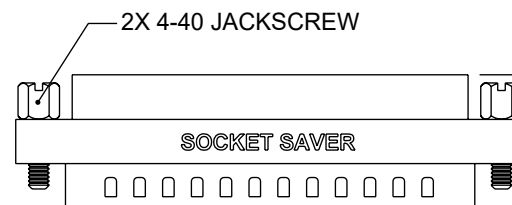
REVISION					
ZONE	REV	DESCRIPTION	DATE	CHANGED BY	APPROVED
	H	ECO-14874	09/04/2025	AKRESOWSKI	DGUST



JACKSCREW
SPECIFICATION



FEMALE, 50 PIN
D-SUB CONNECTOR



MALE, 50 PIN
D-SUB CONNECTOR

UNLESS OTHERWISE SPECIFIED LEADING DIMENSIONS ARE INCHES DIMENSIONS IN [] ARE MILLIMETERS	
TOLERANCES:	
X = ±.2 [5]	FRACTIONS ± 1/32
.XX = ±.02 [0.5]	ANGLES ± 1°
.XXX = ±.005 [0.13]	
CABLE LENGTH TOLERANCES:	
≤12 [305] = +1 [25] / -0	
>12 [305] ≤ 60 [1524] = +2 [51] / -0	
>60 [1524] ≤ 120 [3048] = +4 [102] / -0	
>120 [3048] ≤ 300 [7620] = +6 [152] / -0	
>300 [7620] = +5% / -0	
ALL DIMENSIONS ARE FOR REFERENCE ONLY AND SUBJECT TO CHANGE WITHOUT NOTICE. UN-DIMENSIONED/NON-CRITICAL FEATURES MAY VARY IN SIZE AND LOCATION COLORS MAY VARY	

L-com
an INFINIT® brand

Website: www.L-com.com
Phone: 1.800.341.5266 | 1.978.682.6936

INTERPRET ALL DIMENSIONS AND TOLERANCES PER ASME Y14.5	
SCALE NONE	SHEET 1 OF 1

DESCRIPTION				
ADPT, SKT SAVER DB50 SLIM M/F				
SIZE	CAGE CODE	DRAWN BY	ITEM NO.	REV
A	43321	R.CARRICK	DGB50MF	H

6

5

4

3

2

1